

Secondary Schools

martindales education has delivered the full range of secondary school facilities including general teaching spaces, social areas, science laboratories, performing and expressive arts studios, design technology rooms, IT suites, sports centres, school halls, libraries, staff rooms, kitchens and administrative areas.

For over 15 years the practice has worked directly for individual secondary schools such as Sharnbrook Upper School in Bedfordshire, Clacton County High School in Essex and Sawston Village College in Cambridgeshire. We are able to assist schools both in maintaining their current building stock and in procuring new buildings independently from the local authority.

Primary Schools

martindales education has completed a wide range of primary school projects, principally large extensions and internal alterations, working within the consultant frameworks for Cambridgeshire and Essex County Councils.

Bob Page and Jon Eggar have developed the Cambridgeshire Model Primary School. This is a toolkit for designers and contractors which establishes design standards via typical room layouts, room data sheets and component specifications. Use of the toolkit enables the development of primary school designs that achieve the required standards of accommodation and building performance within the budget available.

A prototype primary school, designed utilising the concepts and specifications of the Model Primary School, has recently been built in St Neots, Cambridgeshire. This school achieves a BREEAM sustainability rating of 'Very Good'.

Special Schools

Bob Page and Jon Eggar have extensive experience in the provision of special schools for all ages (Year 1 to Post-16), catering for a wide range of mental and physical disabilities. In addition they have experience of working on projects at residential schools for pupils with behavioural difficulties.

Pupil Referral Units

martindales education has recently completed the £2.5m Young People's Centre in Wood Green, London as part of the Haringey Building Schools for the Future programme. The new building provides a variety of teaching, study and resource spaces such as a music room, recording studio, technology suite, IT suite and fully-fitted catering kitchen as well as a sports centre.

Bob Page and Jon Eggar have also designed and constructed pupil referral units in Cambridge, Huntingdon and March.

Examples of Project Experience

New Primary Schools

- Great Paxton C of E Primary School, Cambridgeshire*
- Kings Hedges Primary School, Cambridge*
- St Neots (East) Primary School, Cambridgeshire*

New Surestart/Children's Centres

- Abbey Lane Children's Centre, Poplar
- Milwards Primary School, Harlow
- Brunswick Nursery School, Cambridge*
- Kings Hedges Primary School, Cambridge*
- Nene Infant School, Wisbech*

Secondary School Projects

- Sharnbrook Upper School, Bedfordshire
- Henry Compton School, Fulham
- Clacton County High School, Essex
- Bottisham Village College, Cambridgeshire
- Sawston Village College, Cambridgeshire
- Sir Harry Smith Community College, Whittlesey
- The John Henry Newman School, Stevenage
- City of Ely Community College, Cambridgeshire*
- Neale Wade Community College, March*

Special Schools

- Highfield School, Ely*
- Samuel Pepys School, St Neots*
- Springcommon School, Huntingdon*
- Harbour School, Wilburton*

Pupil Referral Units

- Young People's Centre, Haringey, London
- The Amber Centre, Huntingdon *
- Cambridge PRU (feasibility) *
- Fenland PRU (feasibility) *

* Bob Page/Jon Eggar at Cams. CC



martindales architects was founded in 1979. Over the past three decades we have worked on more than 60 new-build and refurbishment education projects, ranging in construction value from £5000 to £12 million.

The practice has considerable expertise in delivering projects at all levels, from nursery, infant, primary and secondary schools through to sixth forms, colleges and universities. The majority of these projects have been procured while working directly with schools and governors.

We act as Architects, Lead Design Consultants and Project Managers employing other consultants as necessary and thus providing a single point of contact between the client and the professional team.

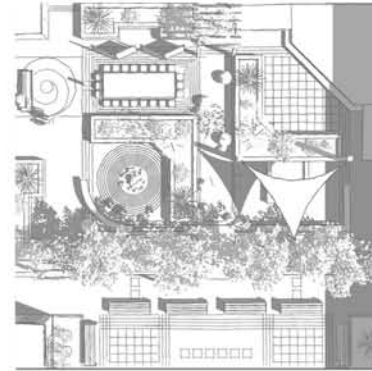
We provide a holistic service from concept to completion. We can advise on funding, carry out curriculum analysis, prepare asset management plans, create development master-plans and develop phasing strategies.

We have extensive experience across all curriculum areas including projects for specialist schools. These include sports, music, science, technology, food, art, performing arts and media studies.

The practice has been involved in several education PFI and BSF programmes. We are currently working within the Haringey Schools BSF Framework and we also achieved ITN status within the Norwich Schools PFI 2005, designing the new secondary school at Taverham.

We are dedicated to the provision of a personal service focused on the requirements of the client. We seek to achieve the highest quality of architectural design and construction, executed within the constraints of budget and programme.

We believe in effective personal relationships, working together with all parties to achieve the client's objectives.



martindales education is led by Bob Page RIBA.

Before joining Martindales Bob spent 17 years as Design Team Leader at Cambridgeshire County Council, designing and managing the construction of new primary schools, major expansions of secondary schools, special schools, children's centres and Surestart nursery units.

Jon Eggar worked with Bob Page at Cambridgeshire County Council for 12 years. Jon started his working life as a teacher and this has enabled him to work closely with schools, staff and governors, understanding their teaching philosophies and articulating them through building design solutions.

Ian Morrison RIBA has been with Martindales since 2001. He has worked on a wide variety of completed education projects including the Young People's Centre in Haringey, the Paula Radcliffe Community Sports Centre at Sharnbrook Upper School, a resource centre and a sixth form centre at Sir Harry Smith School, Whittlesey and the Abbey Lane Children's Centre in Poplar.



1a oakington business park
oakington
cambridge
cb24 3dq

tel: (01223) 202040
fax: (01223) 202041
email: bob.page@martindales.biz
web: www.martindales.biz

martindales education